



EC TYPE EXAMINATION (MODULE B)

CERTIFICATE No. MED057620CS

This is to certify that RINA Services S.p.A. (Notified Body No. 0474) did undertake the relevant type approval procedures for the equipment identified below, which was found to be in compliance with the Fire Protection requirements of Marine Equipment Directive (MED) 2014/90/EU, including the requirements and testing standards of Regulation (EU) 2019/1397.

MED Item N° **MED/3.11a**

USCG Category N° **164.107**

Description **'A' and 'B' Class divisions fire integrity: (a) 'A' Class divisions**

Type **ULTIMATE A-15 BULKHEAD - STEEL**

Applicant **SAINT-GOBAIN ISOVER G+H AG - SAINT - GOBAIN
ISOVER G+H AG**

BURGERMEISTER-GRUNZWEIG-STRASSE 1

67059 Ludwigshafen

GERMANY

Testing standards

IMO Res. MSC.307(88)-(2010 FTP Code) - IMO MSC.1/Circ. 1435

Reference standards

Chap. II-2 of SOLAS 74 Convention, as amended, RINA Rules for the certification of Marine Equipment

Issued in Genoa on

August 6, 2020

This Certificate is valid until

August 5, 2025

This Certificate consists of this sheet plus an attachment

Enrico Cabella

RINA Services S.p.A.

This document is a copy of a digitally signed file available on Rina Web Site: <http://www.rina.org>



**ATTACHMENT TO
CERTIFICATE No. MED057620CS**

Page 1 of 4

Manufacturer

SAINT-GOBAIN ISOVER G+H AG

Place of Manufacturer

BURGERMEISTER-GRUNZWEIG-STRASSE 1
67059 Ludwigshafen
GERMANY

A15 Bulkhead, Steel - Construction 1

Description

Steel bulkhead whose structural core is insulated with one layer of mineral wool type USeaProtect, having density of minimum 24 kg/m^3 and a thickness of minimum 50 mm between the stiffeners and with one layer of mineral wool type USeaProtect, having a density of minimum 24 kg/m^3 and a thickness of minimum 50 mm around the stiffeners.

Products

The following mineral wool types may be used:

USeaProtect Roll 24 Alu1, Roll 24 G220, Roll 24, Roll 24 V1 yellow, Roll 24 V1 black, Roll 24 X, Slab 24 Alu1, Slab 24 B-Al, Slab 24 B-Gl, Slab 24 G120, Slab 24 G220, Slab 24 G420, Slab 24, Slab 24 V1, Slab 24 X.

Field of application

General application - Fire against either side.

Reference document

Saint Gobain Isover drawings No. AK2220 Rev. 3 dated 24 June 2015 approved on 24 September 2015 with endorsement No. LABS-1130.

Tests carried out

Test as per RINA Test Laboratory report No. 2005CS013009/1 issued on 30 August 2005 according to IMO Res. A.754(18).



**ATTACHMENT TO
CERTIFICATE Nr. MED057620CS**

Page 2 of 4

A15 Bulkhead, Steel - Construction 2

Description

Steel bulkhead whose structural core is insulated with one layer of mineral wool type U SeaProtect, having density of minimum 24 kg/m^3 and a thickness of minimum 50 mm between the stiffeners and with one layer of mineral wool type U SeaProtect, having a density of minimum 66 kg/m^3 and a thickness of minimum 30 mm around and below the stiffeners.

Products

The following mineral wool types may be used for the structural core:

U SeaProtect Roll 24 Alu1, Roll 24 G220, Roll 24, Roll 24 V1 yellow, Roll 24 V1 black, Roll 24 X, Slab 24 Alu1, Slab 24 B-Al, Slab 24 B-Gl, Slab 24 G120, Slab 24 G220, Slab 24 G420, Slab 24, Slab 24 V1, Slab 24 X.

The following mineral wool types may be used for the stiffeners:

U SeaProtect Slab 66 Alu1, Slab 66 B-Al, Slab 66 B-Gl, Slab 66 G120, Slab 66 G220, Slab 66 G420, Slab 66, Slab 66 V1, Slab 66 X, Wired Mat 66, Wired Mat 66 V1, Wired Mat 66 Alu1.

Field of application

General application - Fire against either side.

Reference document

Saint Gobain Isover drawings No. AK2221 Rev. 3 dated 24 January 2015 approved on 24 September 2015 with endorsement No. LABS-1131.

Tests carried out

Test as per RINA Test Laboratory reports No. 2005CS013009/1 and No. 2005CS013009/3 issued on 30 August 2005 according to IMO Res. A.754(18).



**ATTACHMENT TO
CERTIFICATE Nr. MED057620CS**

Page 3 of 4

A15 Bulkhead, Steel - Construction 3

Description

Steel bulkhead whose structural core is insulated with one layer of mineral wool type USeaProtect, having density of minimum 66 kg/m^3 and a thickness of minimum 30 mm between the stiffeners and with one layer of mineral wool type USeaProtect, having a density of minimum 66 kg/m^3 and a thickness of minimum 30 mm around the stiffeners.

Products

The following mineral wool types may be used:

USeaProtect Slab 66 Alu1, Slab 66 B-Al, Slab 66 B-Gl, Slab 66 G120, Slab 66 G220, Slab 66 G420, Slab 66, Slab 66 V1, Slab 66 X, Wired Mat 66, Wired Mat 66 V1, Wired Mat 66 Alu1.

Field of application

General application - Fire against either side.

Reference document

Saint Gobain Isover drawings No. AK2222 dated 20 August 2015 approved on 24 September 2015 with endorsement No. LABS-1132.

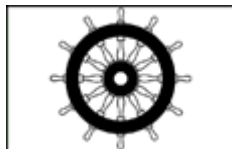
Tests carried out

Test as per RINA Test Laboratory report No. 2005CS013009/3 issued on 30 August 2005 according to IMO Res. A.754(18).

This certificate annuls and replaces the certificate No. MED229915CS/004 dated 09/25/2015 due to renewal.

This document is a copy of a digitally signed file available on Rina Web Site: <http://www.rina.org>

The mark of conformity may only be affixed to the above type approved equipment and a Manufacturer's Declaration of Conformity issued when the production control phase module (D, E or F) of Annex II of the Directive is fully complied with a written inspection agreement with a Notified Body



XXXX/YYYY

"WHEELMARK FORMAT"

XXXX *Notified Body number undertaking surveillance module*

YY *Last two digits of year mark affixed*

USCG Approval

This product has been assigned a U.S. Coast Guard module B number (*USCG number: 164.107/EC0474*) to note type approval to Module B only as it pertains to obtaining U.S. Coast Guard approval as allowed by the "Agreement between the European Community and the United States of America on Mutual Recognition of Certificates of Conformity for Marine Equipment" as amended by Decision N. 1/2018 signed on 18th February 2019.

The manufacturer is allowed to affix the U.S. Coast Guard approval number to the above equipment subject to the authorization of the Notified Body undertaking the surveillance module.

General conditions for the approval

- a) The initial conditions verified by RINA at the time of the approval are to be maintained
- b) Any changes to the initial conditions are to be promptly communicated to RINA, which reserves the right to repeat the relevant assessment
- c) This certificate will no be valid if the manufacturer makes any changes or modifications to the approved equipment, which have not been notified to, and agreed with RINA
- d) RINA personnel are to be allowed to witness during the performances of activities, upon their request
- e) The activities are to be carried out in compliance with the RINA Rules and/or other applicable Rules
- f) Should the specified regulations or standards be amended during the validity of this certificate, the product is to be reapproved prior to it being placed on board vessels to which the amended regulations or standards apply.

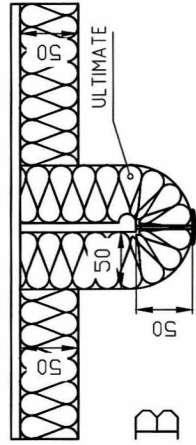
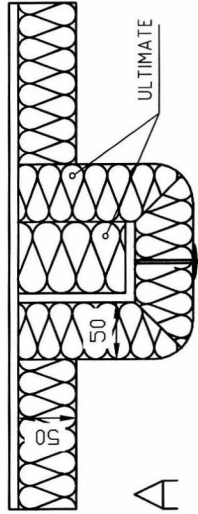
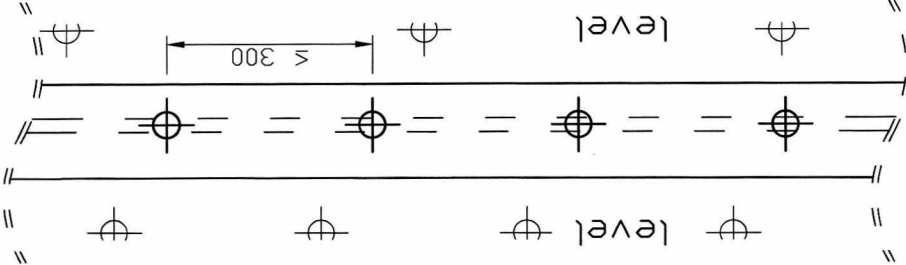


Enrico Cabella

This document is a copy of a digitally signed file available on Rina Web Site: <http://www.rina.org>

top view

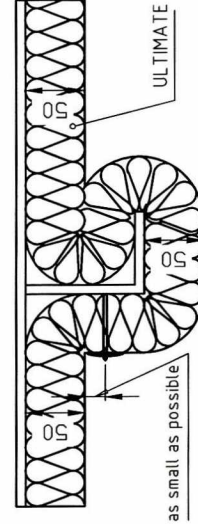
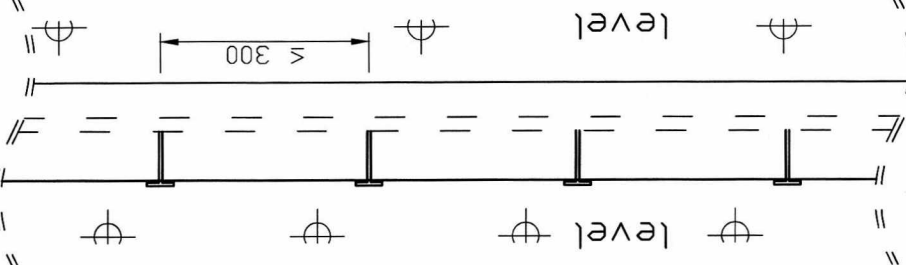
section



stiffener up to 100mm

top view

section



stiffener up to 130mm

LABS-1130



2/4

Possible ULTIMATE stiffener products in 50mm:

- U SeaProtect Roll 24
- U SeaProtect Roll 24 G20
- U SeaProtect Roll 24 V1 yellow
- U SeaProtect Slab 24
- U SeaProtect Slab 24 B-Al
- U SeaProtect Slab 24 G20
- U SeaProtect Slab 24 G420
- U SeaProtect Slab 24 X
- U SeaProtect Roll 24 Alul
- U SeaProtect Roll 24 V1 black
- U SeaProtect Roll 24 X
- U SeaProtect Slab 24 Alul
- U SeaProtect Slab 24 B-Gl
- U SeaProtect Slab 24 G220
- U SeaProtect Slab 24 V1

Drawing for EC-type examination (Modul B) Certificate

Rev.03 2015_06_24

changes: new product names

ISOVER

SAINT-GOBAIN ISOVER

A15 Bulkhead, Steel - Construction 1

ULTIMATE Marine 24 / 50mm - 24 / 50mm

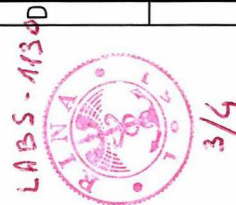
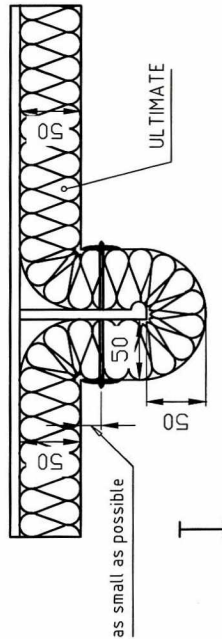
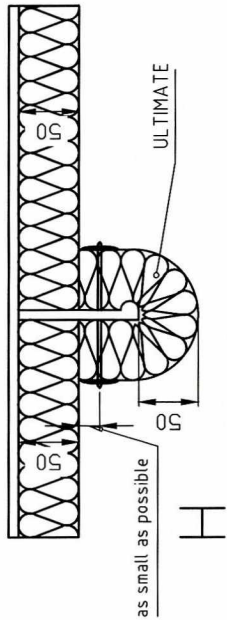
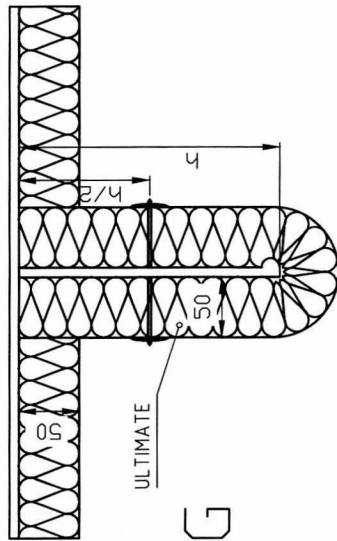
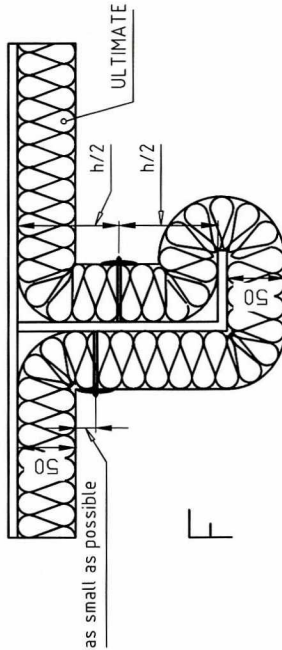
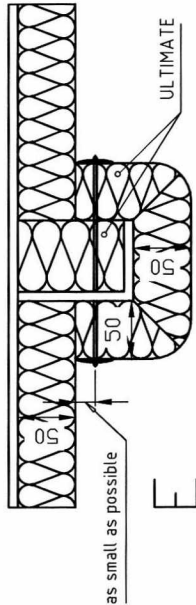
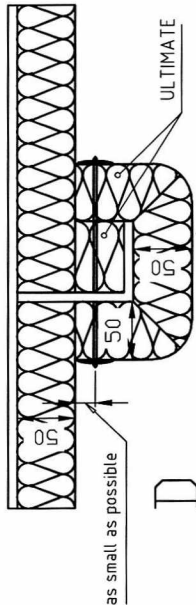
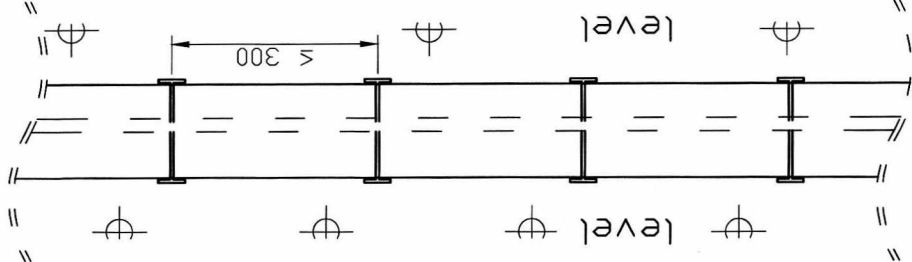
General Application - Fire against either side

Modell / Scale	Gezeichnet / Drawn	Datum / Date	Klass. Nr. / Class. No.	Zuschlags Nr. / Drawing No.	Index
	A. Köhler	24.06.2015		AK2220	2/4

top view

section

section



Possible ULTIMATE stiffener products in 50mm:

- U SeaProtect Roll 24
- U SeaProtect Roll 24 G220
- U SeaProtect Roll 24 V1 yellow
- U SeaProtect Slab 24
- U SeaProtect Slab 24 B-Al
- U SeaProtect Slab 24 G120
- U SeaProtect Slab 24 G420
- U SeaProtect Slab 24 X
- U SeaProtect Roll 24 Alul
- U SeaProtect Roll 24 V1 black
- U SeaProtect Roll 24 X
- U SeaProtect Slab 24 Alul
- U SeaProtect Slab 24 B-Gl
- U SeaProtect Slab 24 G220
- U SeaProtect Slab 24 V1

Drawing for EC-type examination (Modul B) Certificate

Rev.03 2015_06_24
changes: new product names

ISOVER

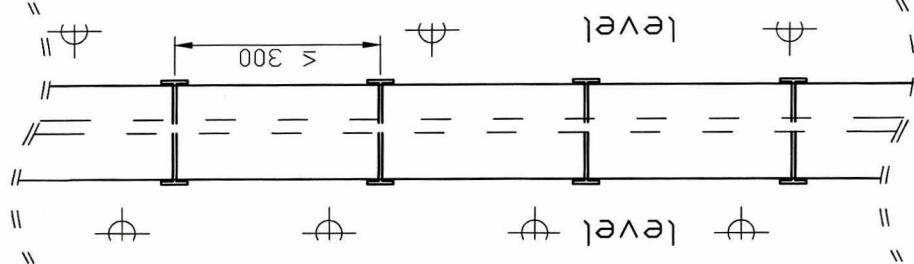
SAINT-GOBAIN ISOVER

A15 Bulkhead, Steel - Construction 1
ULTIMATE Marine 24 / 50mm - 24 / 50mm
General Application - Fire against either side

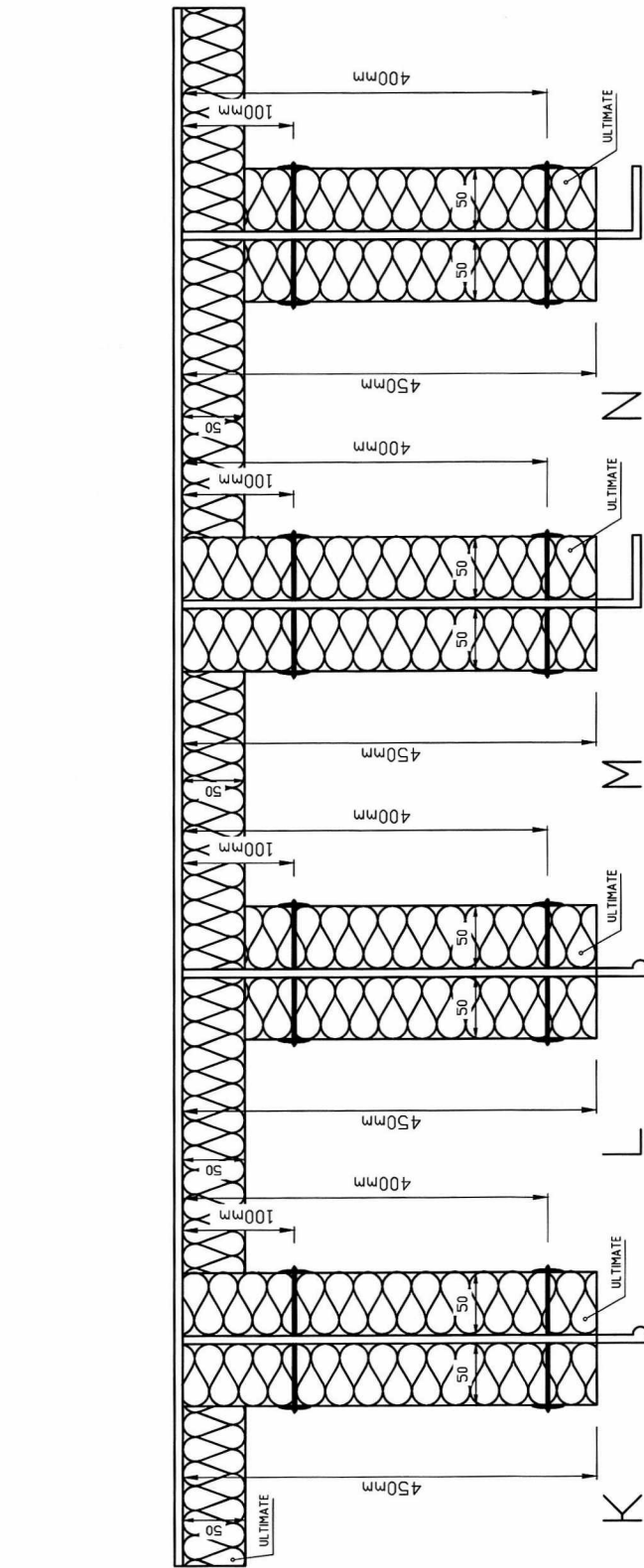
Modulab / Scale	Gezeichnet / Drawn	Datum / Date	Klass. Nr. / Class. No.	Zeichnung Nr. / Drawing No.	Index
	A. Köhler	24.06.2015		AK2220	3/4

Für diese technische Unterlage behalten wir uns alle Rechte vor, auch für den Fall der Patenterteilung oder Gebrauchsmustererteilung. Ohne unsere vorherige Zustimmung darf diese technische Unterlage weder vervielfältigt noch Dritten zugänglich gemacht werden und sie darf durch den Empfänger oder Dritte auch nicht in anderer Weise nützlichlich verwendet werden. Zuwiderhandlungen verpflichten zu Schadensersatz und können strafrechtliche Folgen haben.
We reserve all rights for this technical document including possible grant of patent or registration of a utility model. Without our prior consent, this technical document must not be reproduced / copied, nor may it be made publicly available in any other way by the recipient or any third parties. Noncompliance will result in an obligation for compensation of any damage resulting therefrom and may have penal consequences.

top view



section



stiffener bigger than 450mm

LABS-1130



4/4

Possible ULTIMATE

stiffener products in 50mm:

- U SeaProtect Roll 24
- U SeaProtect Roll 24 G220
- U SeaProtect Roll 24 V1 yellow
- U SeaProtect Slab 24
- U SeaProtect Slab 24 B-Al
- U SeaProtect Slab 24 G120
- U SeaProtect Slab 24 G420
- U SeaProtect Slab 24 X
- U SeaProtect Roll 24 Alul
- U SeaProtect Roll 24 V1 black
- U SeaProtect Roll 24 X
- U SeaProtect Slab 24 Alul
- U SeaProtect Slab 24 B-Gl
- U SeaProtect Slab 24 G220
- U SeaProtect Slab 24 V1

Drawing for EC-type
examination (Modul B)
Certificate

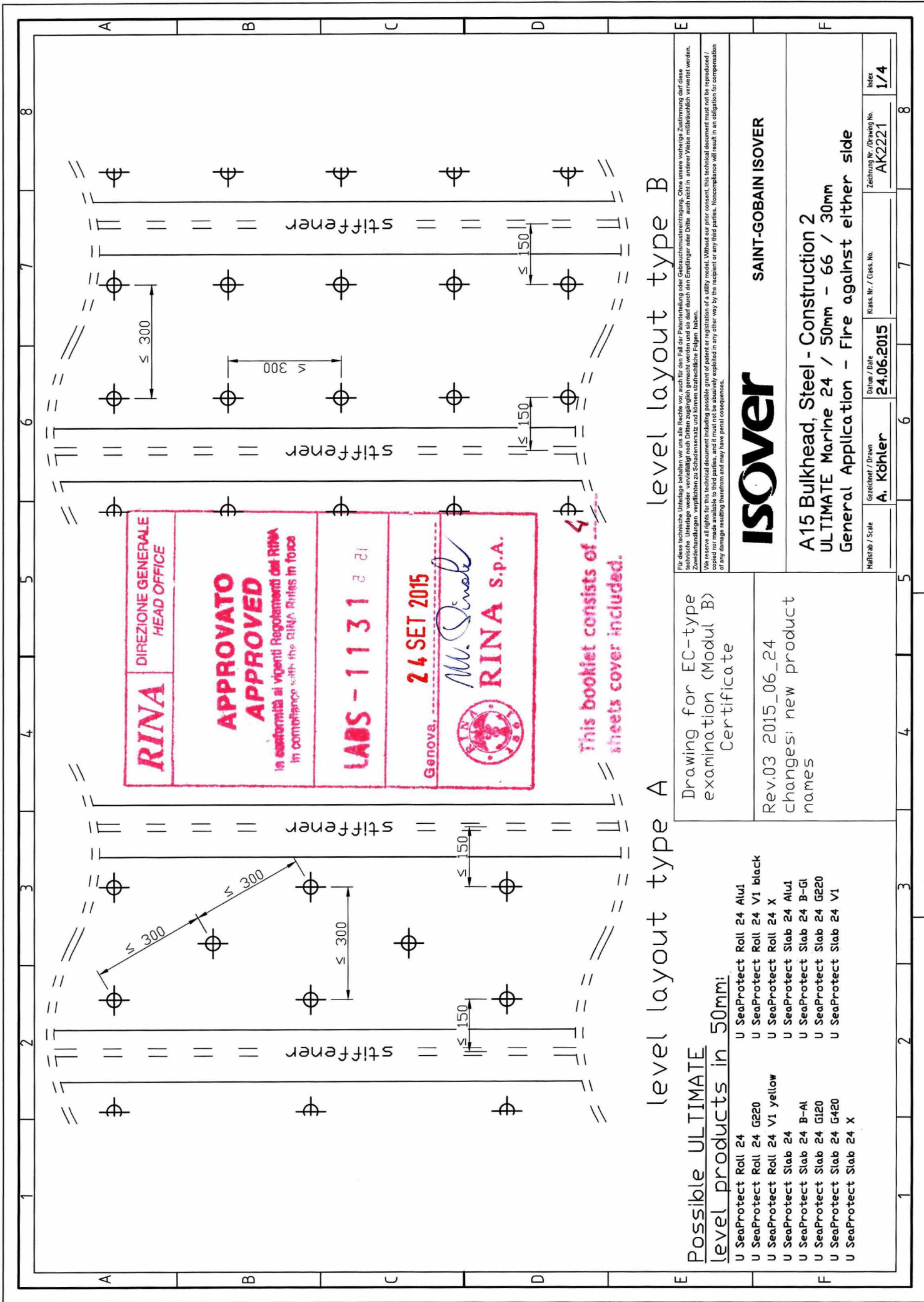
Rev.03 2015_06_24
changes: new product
names

ISOVER

SAINT-GOBAIN ISOVER

A15 Bulkhead, Steel - Construction 1
ULTIMATE Marine 24 / 50mm - 24 / 50mm
General Application - Fire against either side

Maßstab / Scale	Gezeichnet / Drawn	Datum / Date	Klass. Nr. / Class. No.	Zzeichnung Nr. / Drawing No.	Index
	A. Köhler	24.06.2015		AK2220	4/4



Für diese technische Unterlage behalten wir uns alle Rechte vor, auch für den Fall der Patentierung oder Gebrauchsmusteranmeldung. Ohne unsere vorherige Zustimmung darf diese technische Unterlage weder vervielfältigt noch Dritten zugänglich gemacht werden und sie darf durch den Empfänger oder Dritte auch nicht in anderer Weise missbräuchlich verwendet werden. Toute réimpression ou utilisation non autorisée sans la permission écrite de la RINA est formellement interdite. Toute violation de ces réserves de propriété intellectuelle pourra être poursuivie en justice et entraînera des sanctions pénales et/ou civiles. Any unauthorized reproduction or use of this technical drawing without the prior written consent of RINA is strictly prohibited. Any infringement of these intellectual property reserves may result in legal action and may have penal consequences.

Drawing for EC-type examination (Modul B) Certificate

Possible ULTIMATE level products in 50mm:

- U SeaProtect Roll 24
- U SeaProtect Roll 24 G220
- U SeaProtect Roll 24 V1 yellow
- U SeaProtect Slab 24
- U SeaProtect Slab 24 B-Al
- U SeaProtect Slab 24 G120
- U SeaProtect Slab 24 G420
- U SeaProtect Slab 24 X
- U SeaProtect Roll 24 AluI
- U SeaProtect Roll 24 V1 black
- U SeaProtect Roll 24 X
- U SeaProtect Slab 24 AluI
- U SeaProtect Slab 24 B-GI
- U SeaProtect Slab 24 G220
- U SeaProtect Slab 24 V1

ISOVER SAINT-GOBAIN ISOVER

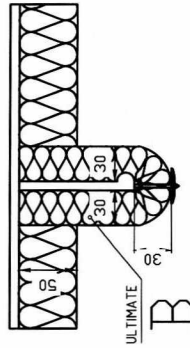
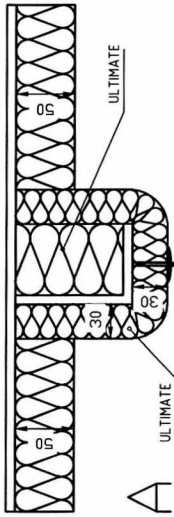
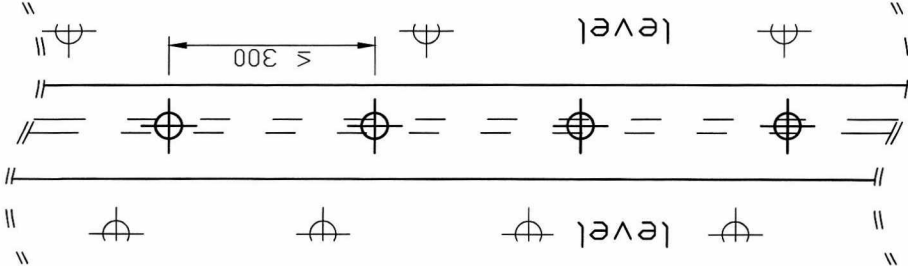
A15 Bulkhead, Steel - Construction 2
ULTIMATE Marine 24 / 50mm - 66 / 30mm
General Application - Fire against either side

Maßstab / Scale	Gezeichnet / Drawn	Datum / Date	Klass. Nr. / Class. No.	Zeichnung Nr. / Drawing No.	Index
	A. Köhler	24.06.2015		AK2221	1/4

Rev.03 2015_06_24
changes: new product names

top view

section



stiffener up to 100mm

LAGS-1131



Possible ULTIMATE stiffener products in 30mm:

- U SeaProtect Slab 66
- U SeaProtect Slab 66 B-Al
- U SeaProtect Slab 66 B-GI
- U SeaProtect Slab 66 G120
- U SeaProtect Slab 66 G220
- U SeaProtect Slab 66 V1
- U SeaProtect Slab 66 X
- U SeaProtect Slab 66 Alu1
- U SeaProtect Slab 66 Alu1
- U SeaProtect Slab 66 B-GI
- U SeaProtect Slab 66 G120
- U SeaProtect Slab 66 G220
- U SeaProtect Slab 66 V1
- U SeaProtect Slab 66 X
- U SeaProtect Slab 66 Alu1

Drawing for EC-type examination (Modul B) Certificate

Rev.03 2015_06_24
changes: new product names

ISOVER

SAINT-GOBAIN ISOVER

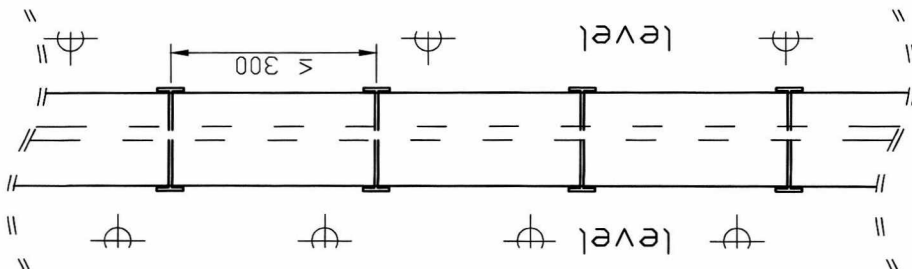
A15 Bulkhead, Steel - Construction 2
ULTIMATE Marine 24 / 50mm - 66 / 30mm
General Application - Fire against either side

Für diese technische Unterlage behalten wir uns alle Rechte vor, auch für den Fall der Patentierung oder Gebrauchsmustereintragung. Ohne unsere vorherige Zustimmung darf diese technische Unterlage weder vervielfältigt noch Dritten zugänglich gemacht werden und sie darf durch den Empfänger oder Dritte auch nicht in anderen Weise missbräuchlich verwendet werden. We reserve all rights for this technical document including possible grant of patent or registration of a utility model. Without our prior consent, this technical document must not be reproduced / copied or in any way be disclosed to third parties. Any unauthorized use or exploitation of any damage resulting therefrom and may have penal consequences.

Hefttitel / Scale	Gezeichnet / Drawn	Datum / Date	Klass. Nr. / Class. No.	Zeichnung Nr. / Drawing No.	Index
	A. Köhler	24.06.2015		AK2221	2/4

top view

NOTES

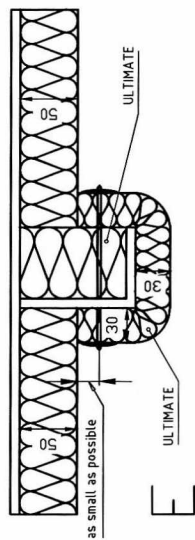
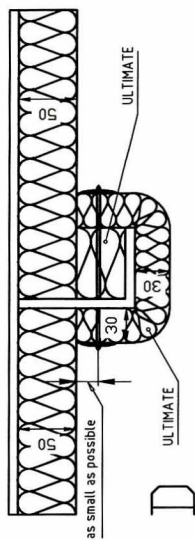
Possible ULTIMATEstiffener products in 30mm:

U	SeaProtect Slab 66	U	SeaProtect Slab 66	AluI
U	SeaProtect Slab 66	B-Al	U	SeaProtect Slab 66
U	SeaProtect Slab 66	G120	U	SeaProtect Slab 66
U	SeaProtect Slab 66	G420	U	SeaProtect Slab 66
U	SeaProtect Slab 66	X	U	SeaProtect Slab 66
U	SeaProtect Slab 66	Wired Mat 66	U	SeaProtect Slab 66
U	SeaProtect Slab 66	Wired Mat 66	AluI	U

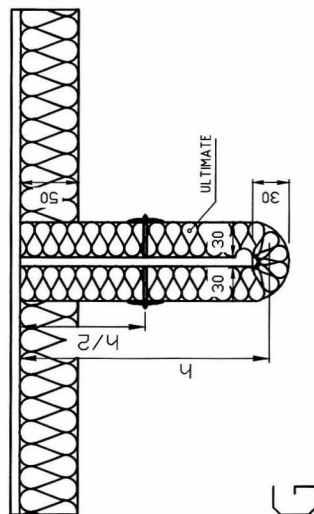
Drawing for EC-type
examination (Modul B)
Certificate

Rev.03 2015_06_24

changes: new product names

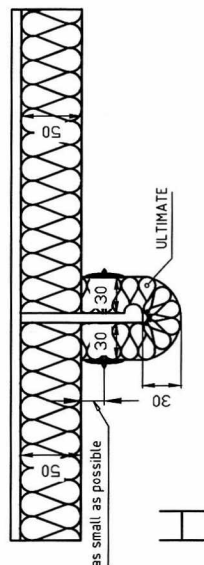


LW



5

Notices



I



Für diese technische Unterlage behalten wir uns alle Rechte vor, auch für den Fall der Patentierung oder Gebrauchsmusteranmeldung. Ohne unsere vorherige Zustimmung darf diese technische Unterlage weder vervielfältigt noch Dritten zugänglich gemacht werden und sie darf durch den Empfänger oder Dritte auch nicht in anderer Weise missbräuchlich verwendet werden. Zuwiderhandlungen verpflichten zu Schadensersatz und können strafrechtliche Folgen haben.

We reserve all rights for this technical document including possible grant or registration of a utility model. Without our prior consent, this technical document must not be reproduced / translated / copied nor may it be made available to third parties, and it must not be abusively exploited in any other way by the recipient or any third parties. Noncompliance will result in an obligation for compensation of any damage resulting therefrom and may have penal consequences.

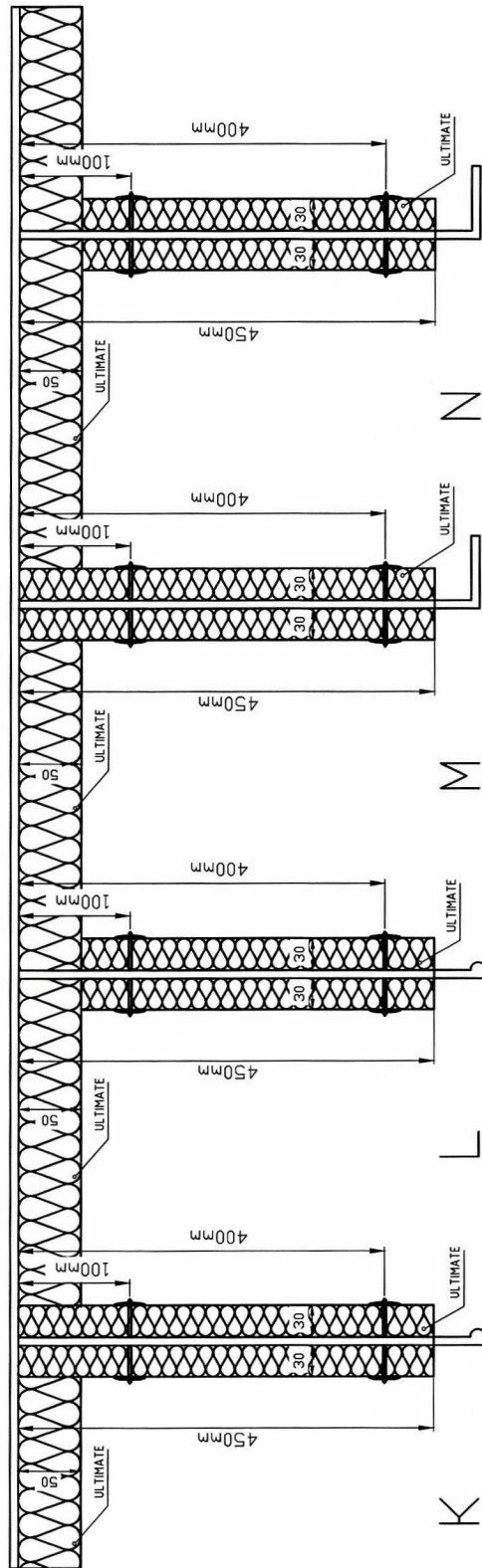
isover

SAINT-GOBAIN ISOVER

A15 Bulkhead, Steel - Construction 2
ULTIMATE Marine 24 / 50mm - 66 / 30mm
General Application - Fire against either side

Maßstab / Scale	Gerechnet / Drawn A. Köhler	Datum / Date 24.06.2015	Klass. Nr. / Class No.	Zeichnung Nr. / Drawing No. AK2221	Index 3/4
-----------------	---------------------------------------	-----------------------------------	------------------------	--	---------------------

Notas



stiffer than 450mm

LABS-1131



412

stiffener products in 30mm:

- | | | | | | | | | | |
|---|------------|-----------|------|------------|------------|------------|-----------|----|----|
| U | SeaProtect | Slab 66 | U | SeaProtect | Slab 66 | Alu1 | | | |
| U | SeaProtect | Slab 66 | B-Al | U | SeaProtect | Slab 66 | B-Gl | | |
| U | SeaProtect | Slab 66 | GI20 | U | SeaProtect | Slab 66 | GI20 | | |
| U | SeaProtect | Slab 66 | G420 | U | SeaProtect | Slab 66 | V1 | | |
| U | SeaProtect | Slab 66 | X | U | SeaProtect | Wired Mat | 66 | | |
| U | SeaProtect | Wired Mat | 66 | Alu1 | U | SeaProtect | Wired Mat | 66 | V1 |

Drawing for EC-type
examination (Modul B)
Certificate

Rev.03 2015 06 24

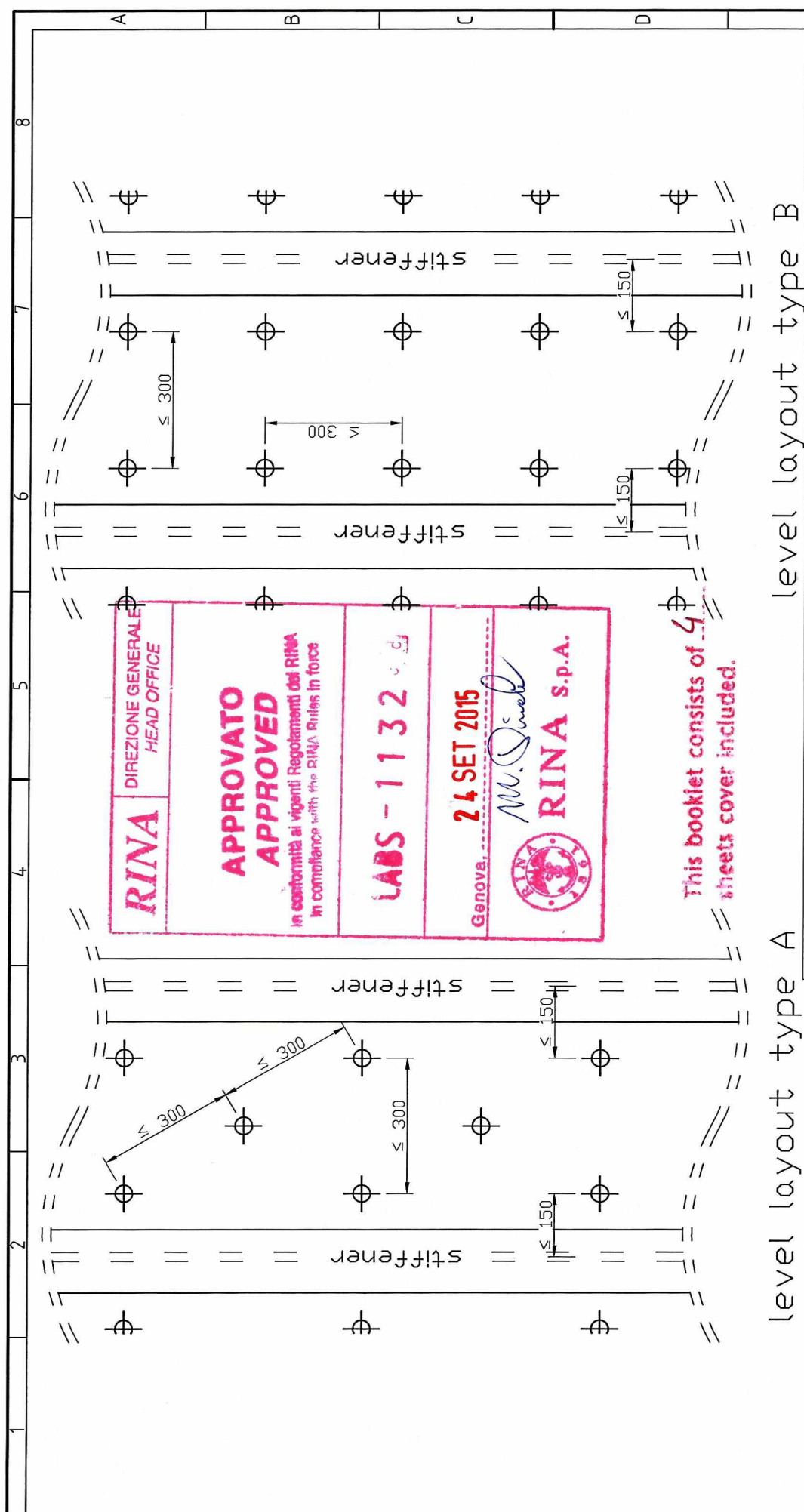
changes: new product names

ISover

SAINT-GOBAIN ISOVER

A15 Bulkhead, Steel - Construction 2
ULTIMATE Marine 24 / 50mm - 66 / 30mm
General Application - Fire against either side

Maßstab / Scale	Gezeichnet / Drawn	Datum / Date	Klass. Nr. / Class. No.	Zeichnung Nr. / Drawing No.	Index
	A. Köhler	24.06.2015		AK221	4/4



level layout type A

level layout type B

Possible ULTIMATE

level products in 30mm:

- U SeaProtect Slab 66
- U SeaProtect Slab 66 B-Al
- U SeaProtect Slab 66 G120
- U SeaProtect Slab 66 G420
- U SeaProtect Slab 66 X
- U SeaProtect Slab 66 Alu1
- U SeaProtect Slab 66 Alu1
- U SeaProtect Slab 66 B-Gl
- U SeaProtect Slab 66 G220
- U SeaProtect Slab 66 V1
- U SeaProtect Slab 66 V1
- U SeaProtect Slab 66 V1
- U SeaProtect Slab 66 V1

Drawing for EC-type examination (Modul B) Certificate

Für diese technische Unterlage behalten wir uns alle Rechte vor, auch für den Fall der Patentierung oder Gebrauchsmusteranmeldung. Ohne unsere vorherige Zustimmung darf diese technische Unterlage weder vervielfältigt noch Dritten zugänglich gemacht werden und sie darf durch den Empfänger oder Dritte auch nicht in anderer Weise missbräuchlich verwendet werden. Zuwiderhandlungen verpflichten zu Schadenersatz und können strafrechtliche Folgen haben.

We reserve all rights for this technical document including possible grant of patent or registration of a utility model. Without our prior consent, this technical document must not be reproduced / copied or disseminated in any way to third parties, and it must not be abusively exploited in any other way by the recipient or any third parties. Noncompliance will result in an obligation for compensation of any damage resulting therefrom and may have penal consequences.

ISOVER SAINT-GOBAIN ISOVER

A15 Bulkhead, Steel - Construction 3
 ULTIMATE Marine 66 / 30mm - 66 / 30mm
 General Application - Fire against either side

Maßstab / Scale	Gezeichnet / Drawn	Datum / Date	Klass. Nr. / Class. No.	Zeichnung Nr. / Drawing No.	Blatt /
	A. Köhler	20.08.2015		AK2222	1/4

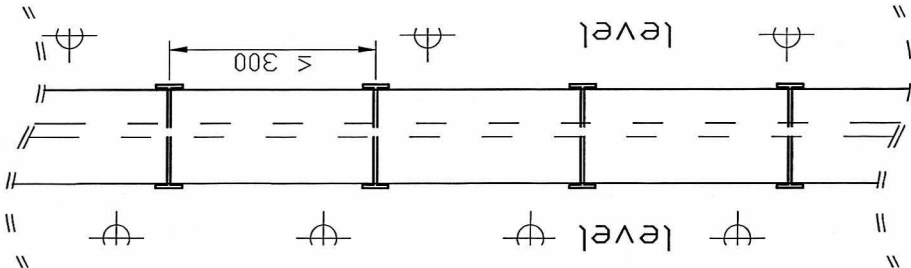


Diagram D shows a rectangular beam with a central rectangular opening. The beam is labeled "ULTIMATE" at the top and bottom. The opening is labeled "as small as possible" with a dimension line. The beam width is 30, and the opening width is 30. The beam height is 30, and the opening height is 30.

Diagram E shows a rectangular beam with a central rectangular opening and a smaller rectangular opening on the right side. The beam is labeled "ULTIMATE" at the top and bottom. The opening is labeled "as small as possible" with a dimension line. The beam width is 30, and the opening width is 30. The beam height is 30, and the opening height is 30.

Diagram F shows a T-beam with a central rectangular opening and a smaller rectangular opening on the right side. The beam is labeled "ULTIMATE" at the top and bottom. The opening is labeled "as small as possible" with a dimension line. The beam width is 30, and the opening width is 30. The beam height is 30, and the opening height is 30.

Drawing for EC-type
examination (Modul B)
Certificate

Possible ULTIMATE
stiffener product

U	SeaProtect Slab 66	U	SeaProtect Slab 66 AluI
U	SeaProtect Slab 66 B-Al	U	SeaProtect Slab 66 B-Gl
U	SeaProtect Slab 66 G120	U	SeaProtect Slab 66 G220
U	SeaProtect Slab 66 G420	U	SeaProtect Slab 66 V1
U	SeaProtect Slab 66 X	U	SeaProtect Wired Mat 66
U	SeaProtect Wired Mat 66 AluI	U	SeaProtect Wired Mat 66 V1

Für diese technische Unterlage behalten wir uns alle Rechte vor, auch für den Fall der Patentierung oder Gebrauchsmustereintragung. Ohne unsere vorherige Zustimmung darf diese technische Unterlage weder vervielfältigt noch Dritten zugänglich gemacht werden und sie darf durch den Empfänger oder Dritte auch nicht in anderer Weise unbefuglich verwertet werden. Zuwiderhandlungen verpflichten zu Schadensersatz und können strafrechtliche Folgen haben.

We reserve all rights for this technical document containing possible grant of patent or copyright. Without our prior consent, this technical document must not be reproduced or copied nor made available to third parties, and it must not be abusively exploited in any other way by the recipient or any third parties. Noncompliance will result in an obligation for compensation of any damage resulting therefrom and may have penal consequences.

ISOVER

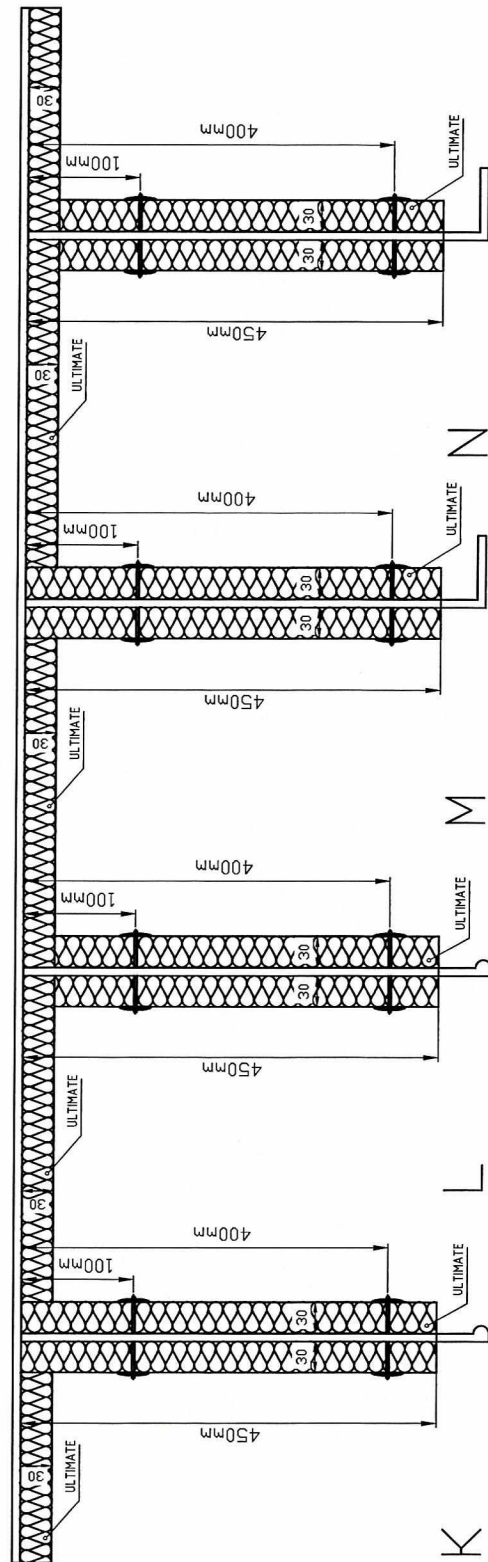
SAINT-GOBAIN ISOVER

A15 Bulkhead, Steel - Construction 3
 ULTIMATE Marine 66 / 30mm - 66 / 30mm
 General Application - Fire against either side

Maßstab / Scale	Gezeichnet / Drawn	Datum / Date	Klass. Nr. / Class. No.	Zeichnung Nr. / Drawing No.	Index
	A. Köhler	20.08.2015		AK2222	3/4

LABS-1832

NOTES



stiffer than 450mm

stiffener products in 30mm:

U	SeaProtect	Slab 66	U	SeaProtect	Slab 66	AluI	
U	SeaProtect	Slab 66	B-Al	U	SeaProtect	Slab 66	B-GI
U	SeaProtect	Slab 66	GI20	U	SeaProtect	Slab 66	GI20
U	SeaProtect	Slab 66	G420	U	SeaProtect	Slab 66	V1
U	SeaProtect	Slab 66	X	U	SeaProtect	Wired Mat 66	66
U	SeaProtect	Wired Mat 66	AluI	U	SeaProtect	Wired Mat 66	V1

Drawing for EC-type
examination (Modul B)
Certificate

ISOVER

SAINT-GOBAIN ISOVER

A15 Bulkhead, Steel - Construction 3
 ULTIMATE Marine 66 / 30mm - 66 / 30mm
 General Application - Fire against either side

Für diese technische Grundlage behalten wir uns alle Rechte vor, auch für den Fall der Patentierung oder Gebrauchsmustereintragung. Ohne unsere vorherige Zustimmung darf diese Grundlage weder in irgendeiner Weise kopiert, reproduziert, weitergegeben, veröffentlicht, verbreitet oder auf andere Weise öffentlich zugänglich gemacht werden, und sie darf durch den Empfänger oder Dritte auch nicht in anderer Weise rechtlich nutzbar verwertet werden. Zuwiderhandlungen werden strafrechtlich und zivilrechtlich verfolgt.



LABS-1132

4/4